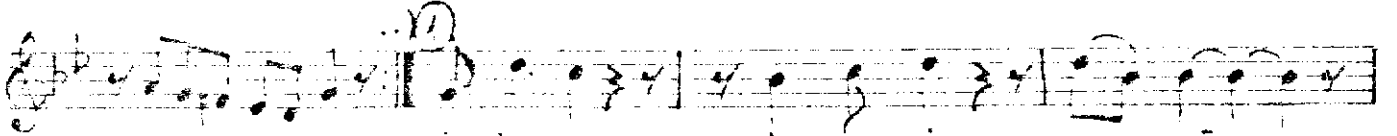
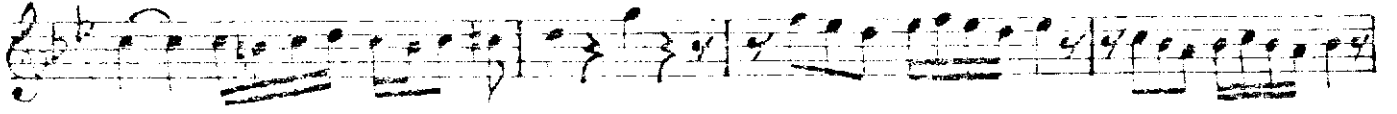
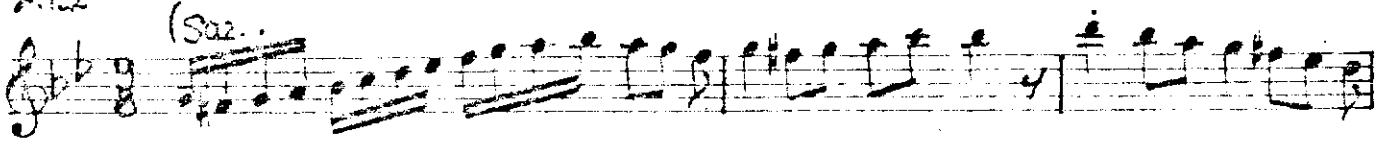


NIHÂVEND ŞARKI

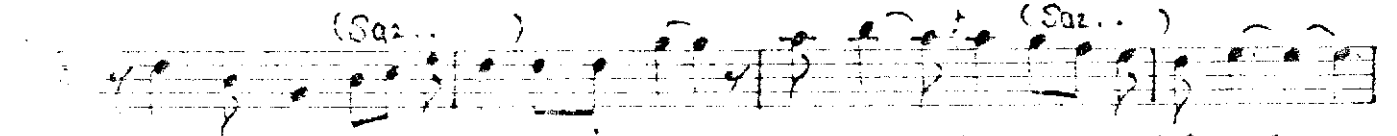
"Dilinde bir yeni sevdâ şarkısı"

Müzik: Bilge ÖZGEN
Söz: Ayten BAYKAL

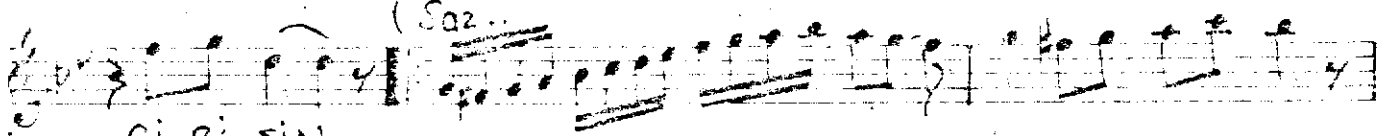
Usûlü: Aksak
2/12



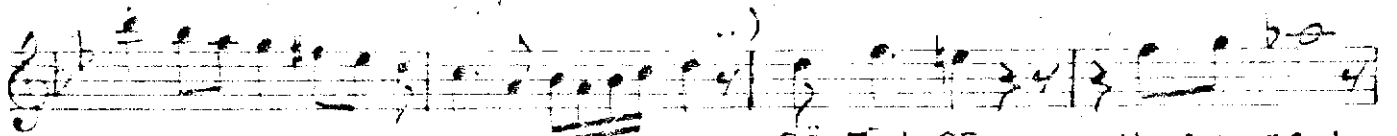
Dİ-LİN-DE BİR YE-Nİ SEV-DÂ



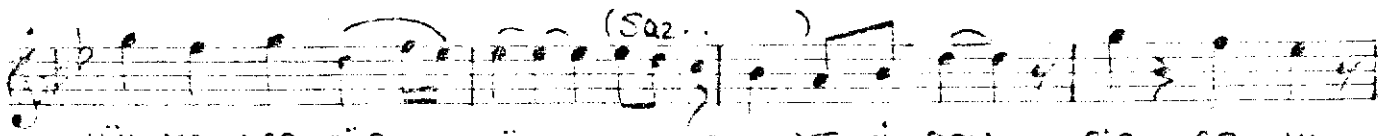
SAR-Kİ-Sİ YENİ-DEN BA-HA-RA KO-SAR



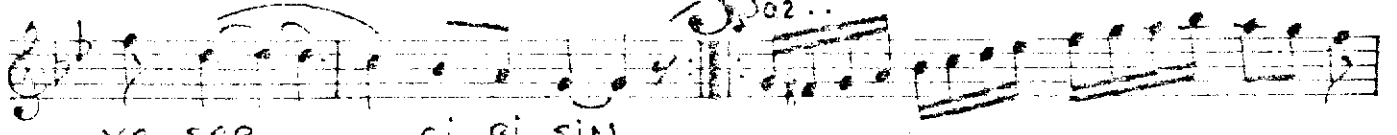
Gİ-Bİ-SİN



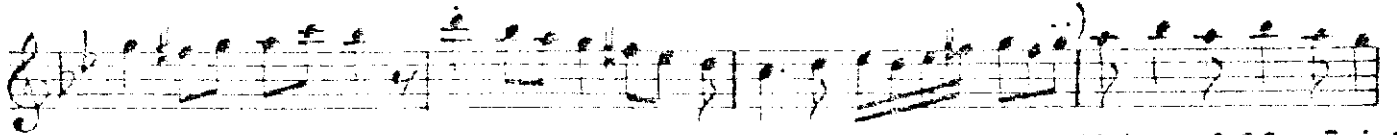
GÖ-ZÜN-DE U-ŞU-ŞAN



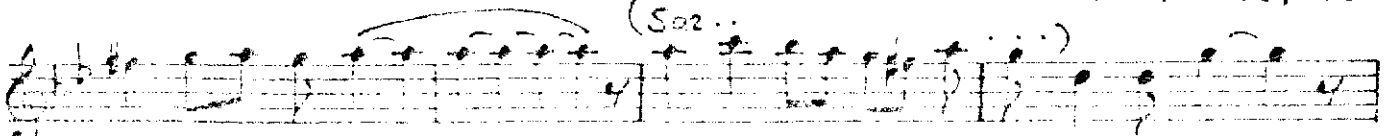
HÜL-YA-LAR GÖR-DÜM YE-Nİ-DEN BİR AŞ-Kİ



YA-SAR Gİ-Bİ-SİN

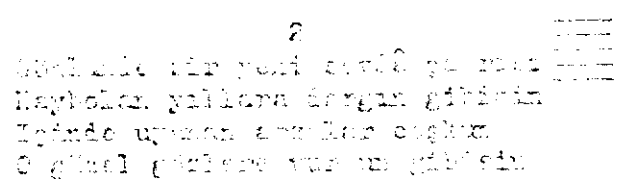
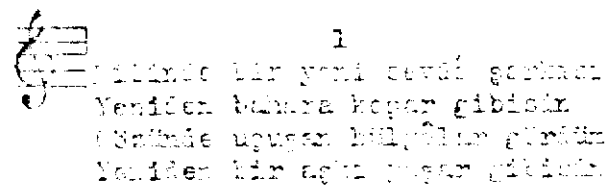
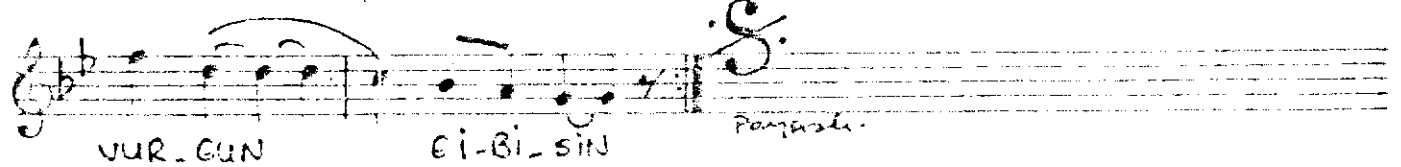
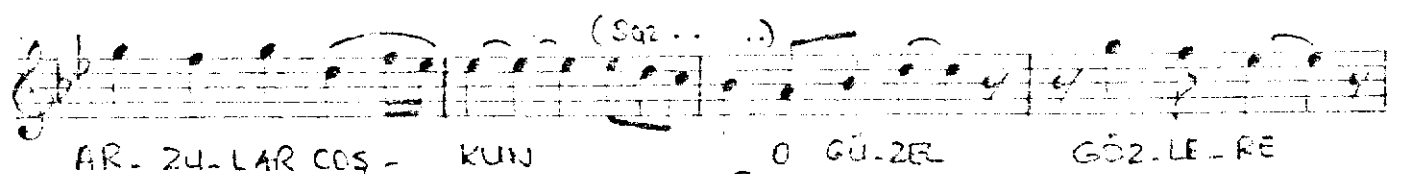
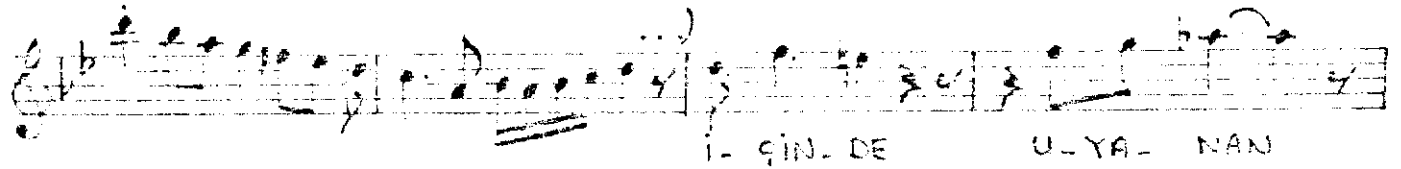
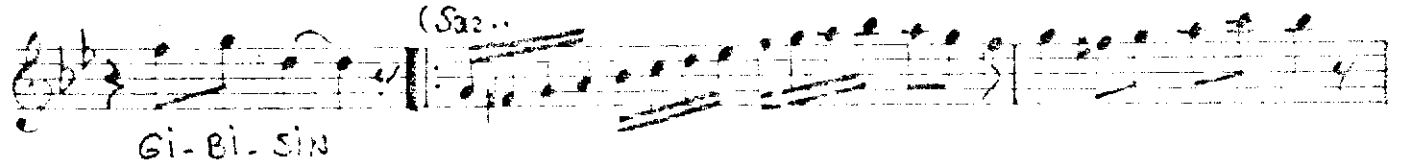
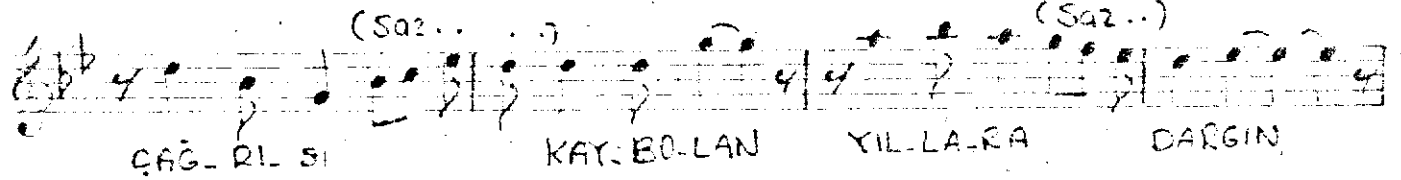
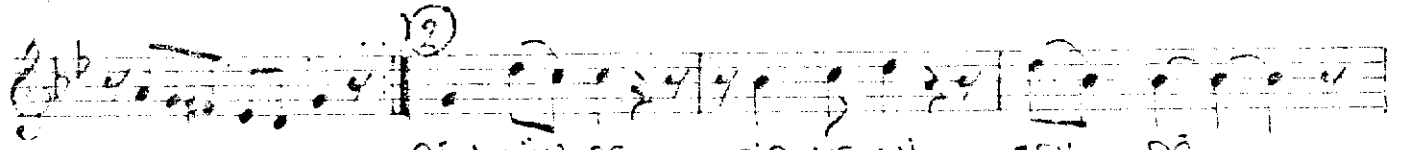
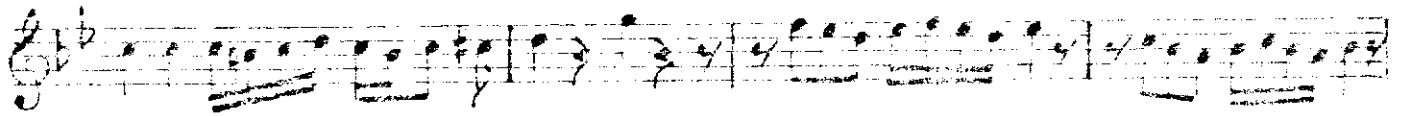
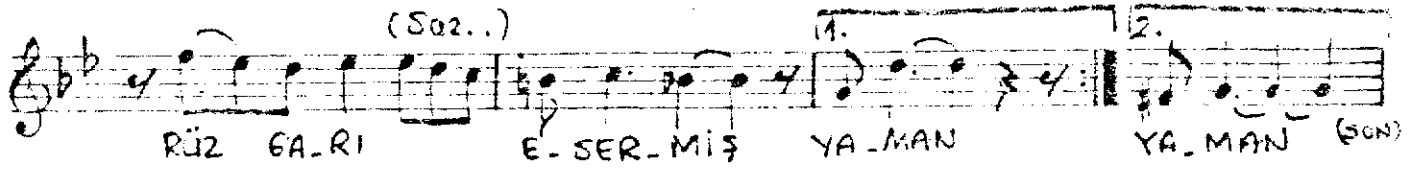


YILKIP DA GEÇERESİN



GÖZ-LÜNÜ A-MAN

SON-BA-HAR



(Sözümde)

Yahut da gözüde bir gözüde gördüm
Kaybolan yollara dargın gibidir